

# BILAGA 2 - LJUDBERÄKNING

WindPRO version 2.7.486 Jan 2011

Project:  
Skakeltorp

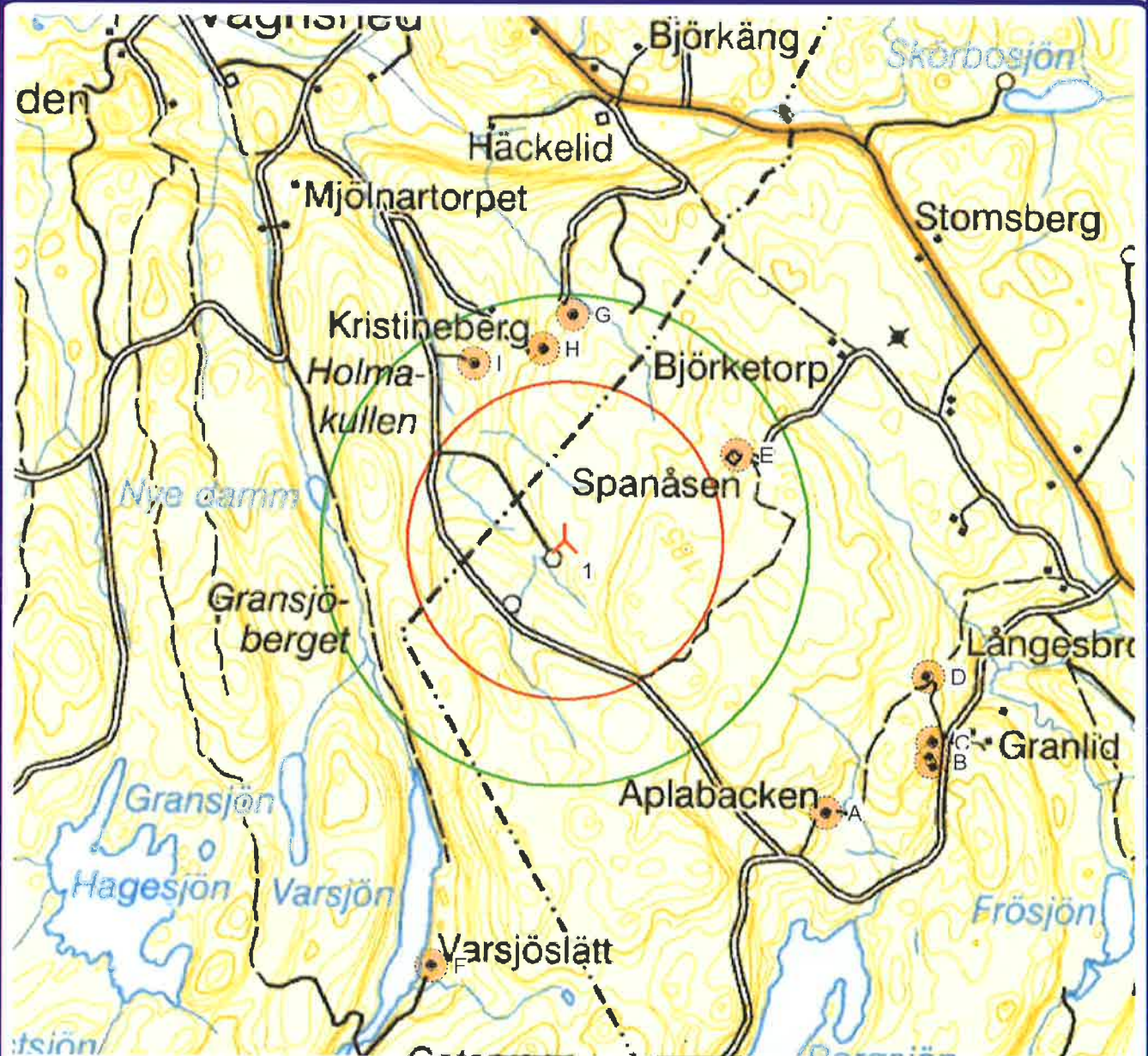
Printed/Page  
2011-10-03 12:06 / 6

Licensed user:  
**AF Industry AB**  
Box 5014  
SE-25005 Helsingborg  
+46105055032  
Mattias Montelin / mattias.montelin@afconsult.com  
Calculated:  
2011-10-03 12:05/2 7 486



## DECIBEL - Map 8,0 m/s

Calculation: Ljudberäkning SkakeltorpNoise calculation model: Swedish, Jan 2002, Land 8,0 m/s



Map: , Print scale 1:18 000, Map center Rikets Net (SE) East: 1 307 561 North: 6 435 466  
Noise calculation model: Swedish, Jan 2002, Land. Wind speed: 8,0 m/s

New WTG

Noise sensitive area

Height above sea level from active line object

35,0 dB(A)

40,0 dB(A)

Project:

Skakeltorp

Printed/Page

2011-10-03 12:06 / 1

Licensed user:

ÅF Industry AB

Box 5014

SE-25005 Helsingborg

+46105055032

Mattias Montelin / mattias.montelin@afconsult.com

Calculated:

2011-10-03 12:05/2.7.486



## DECIBEL - Main Result

### Calculation: Ljudberäkning Skakeltorp

#### SVENSKA BESTÄMMELSER FÖR EXTERNT BULLER FRÅN LANDBASERADE VINDKRAFTVERK

Beräkningen är baserad på den av Statens Naturvårdsverk rekommenderad metod "Ljud från landbaserade vindkraftverk", 2001 (ISBN 91-620-6249-2)

Roughness class: 1,5  
 Roughness length: 0,055  
 K: 1.0 dB/(m/s)

#### OBSERVERA

Oktavdata saknas för ett eller flera av vindkraftverken där avståndet överstiger 1 000 m till beräkningspunkten (Ljudkänsligt område).



Scale 1:40 000  
 New WTG Noise sensitive area

### WTGs

RN	East North Z			Row data/Description	WTG type			Power, rated [kW]	Rotor diameter [m]	Hub height [m]	Noise data		Wind speed [m/s]	Hub height [m]	LwA,ref [dB(A)]	Pure tones	Octave data
	Valid	Manufact.	Type-generator		Creator	Name											
1	1 307 404	6 435 432	160,3	VESTAS V90 2000 90.0 IO!	Yes	VESTAS	V90-2 000	2 000	90,0	105,0	EMD	Level 0 - calculated - Mode 0 - 05-2008	8,0	105,0	104,0	No	Generic *

\*Notice: One or more noise data for this WTG is generic or input by user

### Calculation Results

#### Sound Level

Noise sensitive area No.	Name	RN			Imission height [m]	Demands		Sound Level From WTGs [dB(A)]	Demands fulfilled ?		
		East	North	Z [m]		Noise [dB(A)]	Distance [m]		Noise	Distance	All
A	Vårgårda - Skakeltorp 2:5	1 308 187	6 434 622	156,6	1,5	40,0	500	30,4	Yes	Yes	Yes
B	Vårgårda - Gisslatorp 1:15	1 308 498	6 434 773	152,3	1,5	40,0	500	29,1	Yes	Yes	Yes
C	Vårgårda - Gisslatorp 1:14	1 308 504	6 434 831	154,0	1,5	40,0	500	29,3	Yes	Yes	Yes
D	Vårgårda - Strömsberg 1:7	1 308 491	6 435 026	153,2	1,5	40,0	500	30,1	Yes	Yes	Yes
E	Vårgårda - Vittene 3:10	1 307 921	6 435 686	185,0	1,5	40,0	500	37,8	Yes	Yes	Yes
F	Alingsås - Rödene 2:5	1 307 008	6 434 166	154,1	1,5	40,0	500	28,7	Yes	Yes	Yes
G	Alingsås - Börta 1:12	1 307 430	6 436 104	160,2	1,5	40,0	500	36,0	Yes	Yes	Yes
H	Alingsås - Börta 3:7	1 307 340	6 436 001	160,9	1,5	40,0	500	37,8	Yes	Yes	Yes
I	Alingsås - Börta 3:27	1 307 132	6 435 959	146,0	1,5	40,0	500	37,4	Yes	Yes	Yes

#### Distances (m)

WTG	NSA	Distance [m]
1	A	1127
	B	1278
	C	1254
	D	1161
	E	577
	F	1327
	G	672
	H	573
	I	593